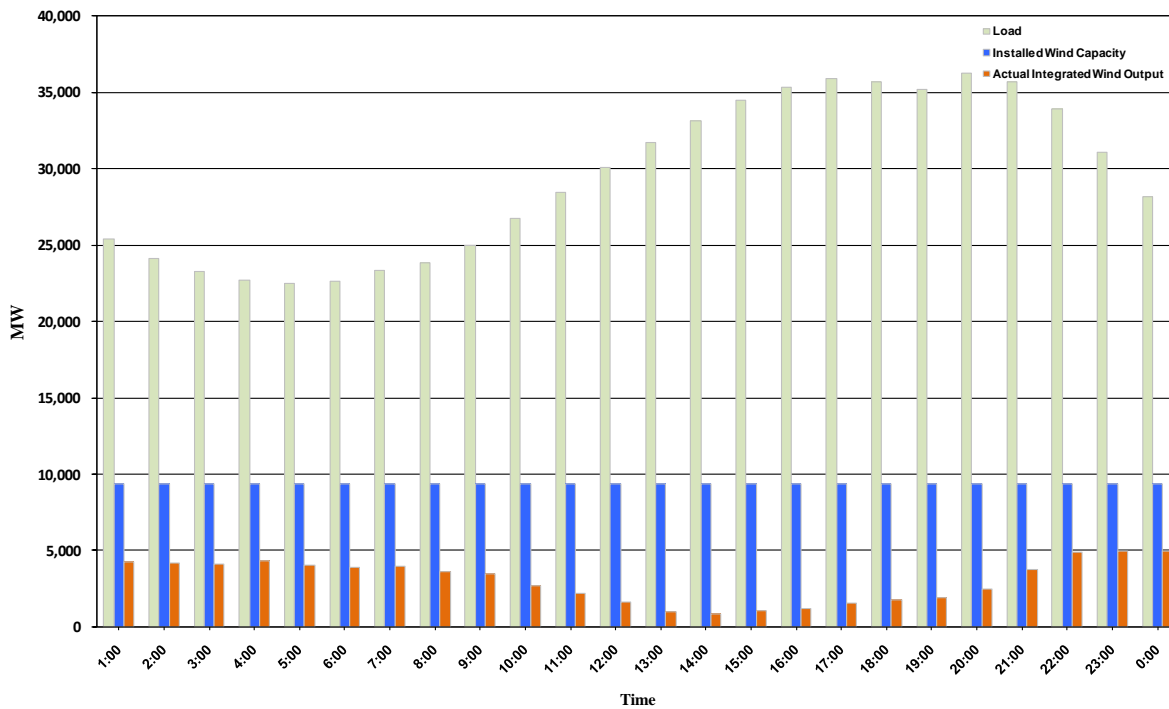




ERCOT Grid Operations Wind Integration Report: 10/17/10

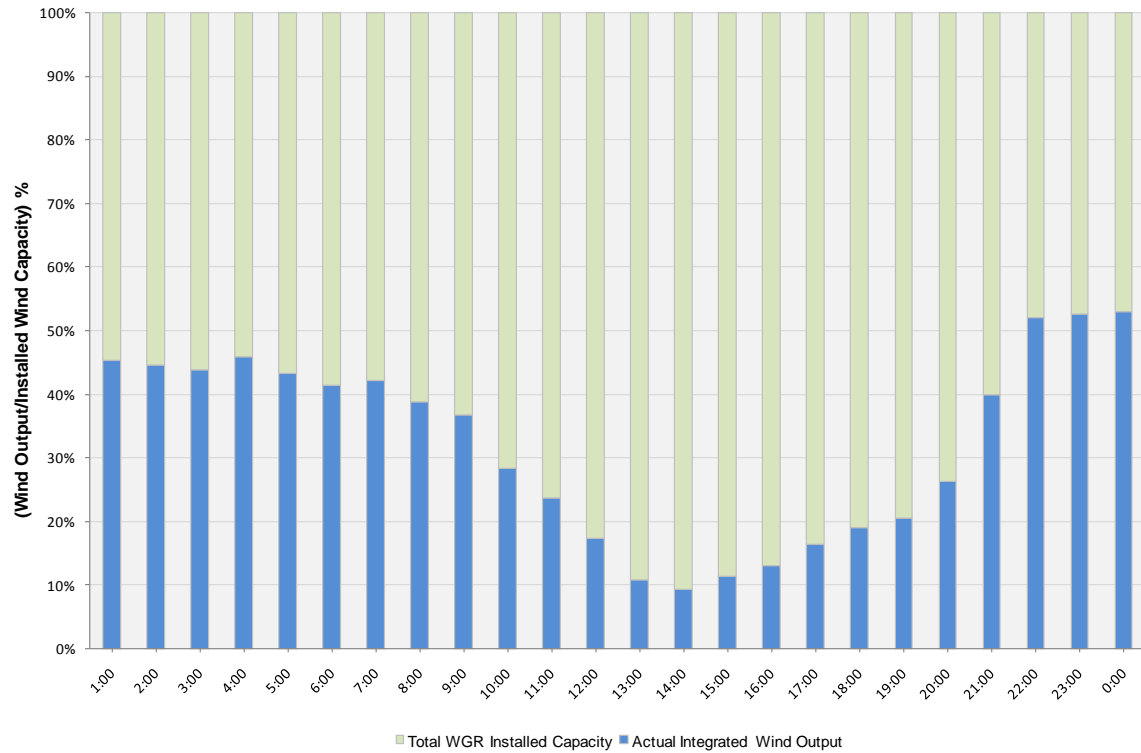
Peak Load	36,216 MW
Load Peak Hour	20
Wind Record 06/12/10	7016 MW
Max Wind value	5118 MW
Wind Peak Hour	21:38:16
Wind Integration %	15.19

Hourly Average Actual Load vs. Actual Wind Output
10-17-2010

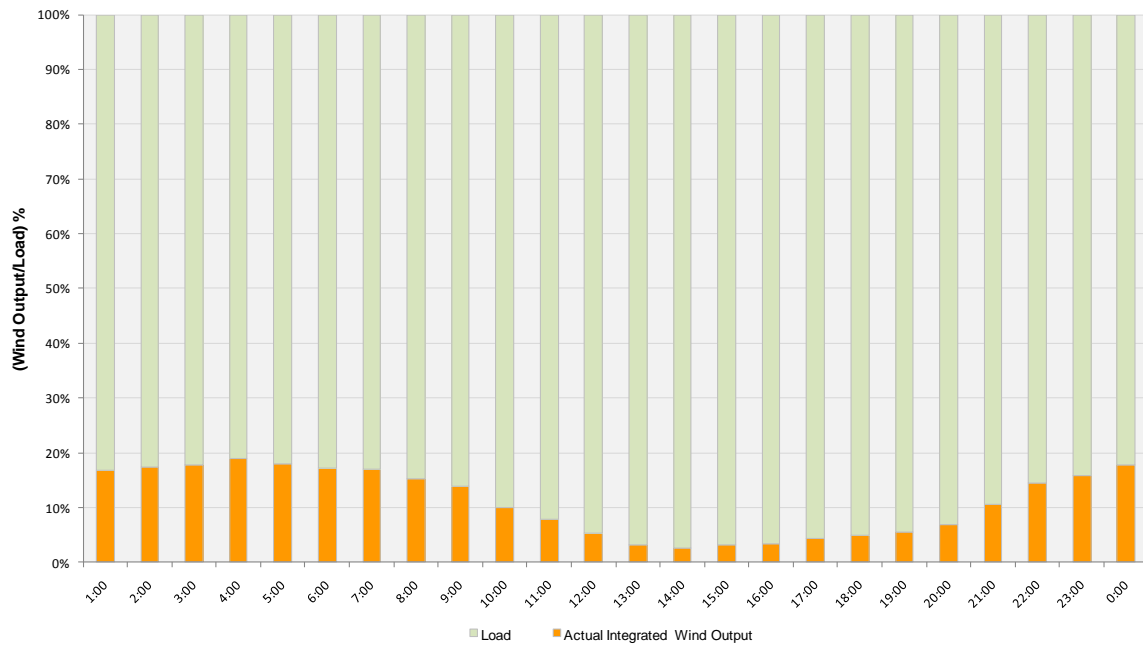




Actual Wind Output as a Percentage of the Total Installed Wind Capacity
10-17-2010



Actual Wind Output as a Percentage of the ERCOT Load
10-17-2010





ERCOT Load vs. Actual Wind Output 10/10/10 - 10/17/10

